

SUMS
Integrated
Report

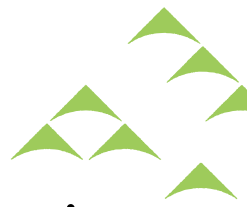
2022 –English version–



IR

**Shiga University of
Medical Science**

滋賀医科大学 統合報告書 2022



To Make SUMS and the Local Community Sustainable and Attractive

— 48 years after the University’s founding, we embarked on the 4th Medium-Term Goals and Plans —

President Shinji Uemoto

Shiga University of Medical Science (SUMS), which was founded in 1974, will celebrate its 50th anniversary in 2024, two years from now. Under the concept of “One Prefecture, One Medical University,” SUMS was established in response to the passionate desire and support of the people of Shiga Prefecture. As the university which is “supported by the local community, contributes to the community, and plays an active part in the world,” we have aimed to contribute to the development of medical and nursing sciences and the promotion of human health. In addition to fostering outstanding medical professionals who provide holistic medical and nursing care in the prefecture, we have produced leaders in medicine and nursing science nationwide by promoting distinctive medical and nursing research and advanced medical care.

Striving for a Virtuous Circle of Sustainable Organization and Attractive Environment

SUMS has achieved its current level thanks to the efforts of our alumni and alumnae and their association “Koikai,” as well as the understanding and support of the local community and all people surrounding SUMS. However, in order to envision a bright future based on this development, it is vital for us, as an organization, to be sustainable. The sustainability creates an attractive environment in which students, faculty and staff can study and work with a sense of reassurance, and the success in providing such environment makes everyone more engaged, which generates a virtuous cycle of sustainable organization and attractive environment.

With this in mind, we have been working toward the key concept “To Make SUMS and the Local Community Sustainable and Attractive” since FY2021, with the aim of developing the university and making greater contributions to health care in Shiga. This key concept also serves as the basic idea of the 4th Medium-Term Goals and Plans, starting from FY2022.

The Most Important Task: Recruiting Medical Specialist Trainees and Graduate Students in Nursing

For organization sustainability, we target three areas: (1) human resource development; (2) finances; and (3) facilities and equipment. The first target is further linked to sustainability in community medicine, education, and research, but the most important task is promoting recruitment of medical specialist trainees* and graduate students in nursing. Recruiting a large number of medical specialist trainees will support the development of community medicine including the University Hospital, and eventually those trainees will become young, open-minded, and talented graduate students at SUMS, which will allow us to enhance research at this school. Due to the promotion of medical education from the students’ perspective and the efforts of each medical department, recruitment activities for medical specialist trainees under the new specialist system that started in FY2018 is progressing favorably. This year, we have welcomed 64 medical specialist trainees, and are looking forward to a bright future.

In addition, the goal of nursing education is to develop nurses who will play leading roles in health care in Shiga. Therefore, graduate school education is becoming increasingly important. Fortunately, we accepted a sufficient number of students in the Graduate School of Medicine’s Master’s Program for Nursing this year.

Fostering and Supporting Young Researchers is Vital for the Future Development of SUMS

Furthermore, SUMS has reorganized its distinctive research centers to establish the Advanced Medical Research Organization. Within this organization, we have established the Medical Innovation Research Center, which consists of the Pioneering Research Division and the International Joint Research Division. We plan to welcome young researchers to this center to undertake novel research. Fostering and supporting young researchers, including graduate students, is vital for the future development of our university. The presence of graduate students and young researchers who are committed to research and active internationally would be great role models for students and young medical doctors and nurses. We hope that this commitment and promotion will attract young doctors and nurses to form a positive human resource cycle.

*Medical specialist trainees: medical doctors who have completed two years of initial clinical training after obtaining their national medical license, and are in their third year or higher as a medical doctor who seek for a board-certified fellowship.

Management of the University Hospital and Acquisition of External Funds is Critical for Fiscal Sustainability

For the second target, finances, proper management of the University Hospital and acquisition of external funds is critical. Despite the COVID-19 pandemic, the management of the University Hospital is in good shape and the staff never faltered in providing quality medical care. In addition, the acquisition of external funds such as Grants-in-Aid for Scientific Research is also on track, and several joint research laboratories were established this year. Acquiring external funds not only stimulates research, but also contributes significantly to the overall finances of the University with overhead expenses. In addition to the financial sustainability, obtaining government grants through proactive application efforts will enable us to renovate aging facilities and update equipment, thereby improving the sustainability of facilities and equipment (the third target).

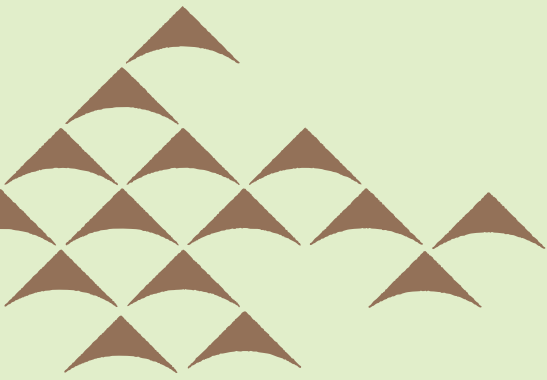


Organizational Transparency is Critical to an Attractive University

Organizational transparency is critical for an attractive University. Transparency works when the faculty and staff are mutually accountable to each other under the principle of open access to information. This successful implementation creates a good relationship of trust among the faculty and staff. We believe that such strong ties will lead to better compliance and harassment prevention.



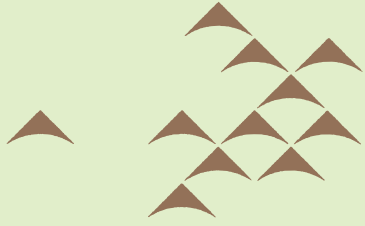
This integrated report includes introductions of some SUMS alumnae and alumni who are active domestically and internationally. We hope that this report will help our stakeholders grasp our contributions from a broad perspective and reaffirm the pride that students, faculty, and staff have in SUMS, which will motivate them in the coming decades.



Explore SUMS

A Half-Century of SUMS History





Looking Back on History, Moving toward the Future

History

Photos from graduation memorabilia are included for alumni to reminisce.

Value Creation Process

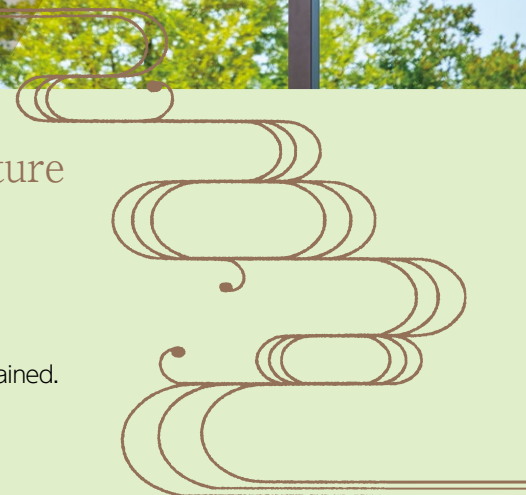
The process of SUMS leveraging its various capital resources to create values is explained.

Medium-Term Goals and Plans

The achievements of the Third Period are mainly introduced, and the goals and KPIs (Key Performance Indicators) for the Fourth Period outlined.

Quick Facts of SUMS

Key figures and information are provided for a better understanding of the features and strengths of SUMS.



History & Milestones



1974 ■2/16 Planning Office for Establishing SUMS set up in Kyoto University
■10/1 Shiga University of Medical Science established in Moriyama City

1975 ■4/10 First Entrance Ceremony held
■5/2 Opening Ceremony held
■6/23 Shakunage-kai (philanthropist organization for body donation) established

1976 ■8/16 University Campus moved to its current location in Seta, Otsu City

1977 ■9/17 Memorial Monument for Body Donors erected

1978 ■6/28 Collaborative Research Facilities established

1979 ■12/12 Anatomy Center established

1981 ■3/25 First Graduation Ceremony for the School of Medicine held
■4/14 Graduate School established
■5/9 First Entrance Ceremony for the Graduate School held

1985 ■3/23 First Doctorate degrees in Medical Science awarded

1989 ■6/28 Molecular Neurobiology Research Center established

1990 ■6/8 Health Administration Center established

1994 ■4/1 School of Nursing established
■4/25 First Entrance Ceremony for the School of Nursing held

1997 ■4/1 Multimedia Center established

1998 ■3/25 First Graduation Ceremony for the School of Nursing held
■4/1 Master's Program in Nursing established
■4/24 Entrance Ceremony for the Nursing Course at the Graduate School of Medicine held

1999 ■4/1 Molecular Neuroscience Research Center established

2000 ■3/27 First Master's degree in Nursing awarded by the Graduate School of Medicine

2002 ■4/1 Research Center for Animal Life Science established
■5/22 Biomedical MR Science Center, Lifestyle-Related Diseases Prevention Center established
■11/6 Center of Educational Research on Medicine and Welfare established

2004 ■4/1 Education and Research Center for Promotion of the Medical Professions established
With the enactment of the National University Corporation Law, national universities were incorporated, which also made SUMS a national university corporation.
■6/3 Skills Laboratory established

2005 ■4/1 Central Research Laboratory established
Midwifery Program established

2006 ■6/29 Biomedical Innovation Center established

2007 ■2/1 SUMS Child Care Center established

2008 ■9/25 Research Collaboration and Promotion Center established

2009 ■4/1 Research Promotion Organization for Intractable Neurological Disease established

2011 ■7/1 Office for Gender Equality established

2013 ■4/1 Center for Epidemiologic Research in Asia established

2014 ■4/1 Community Healthcare Education and Research Center established
■9/4 Skills Lab Building completed

2015 ■11/26 Research Ethics Office established

2016 ■4/1 Molecular Neuroscience Research Center reorganized

2017 ■4/1 Management Office of Medical Research established
■5/1 Research Administration Office reorganized

2018 ■4/1 Information Technology and Management Center established
■6/14 Education Promotion Office established

2019 ■4/1 IR Office established
Admissions Center established
Center for Advanced Medicine against Cancer established
Comprehensive Strategy Council established
■7/1 Education Center for Medicine and Nursing established

1978 ■4/1 University Hospital established with 15 departments
■10/1 The University Hospital opened with 320 beds

1980 ■1/9 180 beds added, for a total of 440 beds
■5/21 160 beds added, for a total of 600 beds

1990 ■6/8 Division of Emergency and Critical Care Medicine established

1993 ■4/1 Intensive Care Unit (ICU) established

1995 ■4/1 Hospital classroom (belongs to Seta Higashi Elementary School) opened

1996 ■4/1 Blood Service Center established

1997 ■4/1 Clinical Section of General Medicine established

1st Medium-Term Goals and Plans 2004-2009

SUMS will celebrate its 50th anniversary in 2024



2024

4th Medium-Term Goals and Plans 2022-2027

3rd Medium-Term Goals and Plans 2016-2021

2nd Medium-Term Goals and Plans 2010-2015

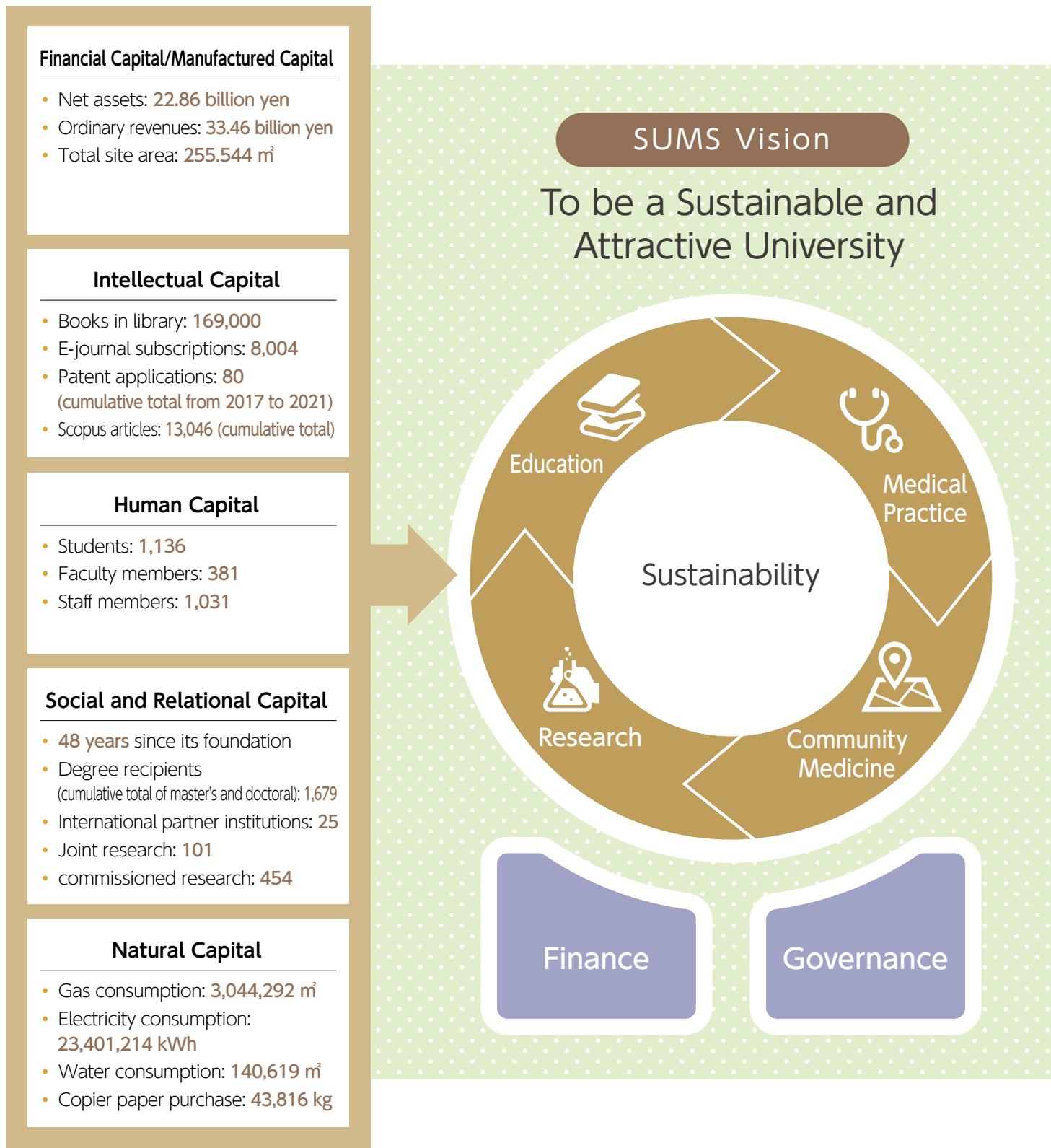
- 2020** ■4/1 International Center established
- 2021** ■4/1 NCD Epidemiology Research Center established
Department of Research and Development for Innovative Medical Devices and Systems established
- 2022** ■4/1 Advanced Medical Research Organization established
Medical Innovation Research Center established
Molecular Engineering Institute, Functional Materials Laboratory established
Molecular Engineering Institute, Molecular Design of New Materials Laboratory established
Department of Regenerative Medicine Development established
Department of Biocommunication Development established
- 10/1 Department of Therapeutics for Protein Misfolding Diseases established
Molecular Engineering Institute, Sustainable Materials Development Laboratory established
- 2024** ■10/1 50th Anniversary

- 1999** ■4/1 Clinical Trials Management Office established
- 2001** ■4/1 Section of Medical Informatics and Biomedical Engineering established
- 2002** ■4/1 Section of Endoscopy established
Clinical Departments reorganized: Internal Medicine I, II and III into Cardiovascular Medicine, Respiratory Medicine, Gastroenterology, Hematology, Endocrinology and Metabolism, Nephrology, and Neurology; Surgery I and II into Gastrointestinal Surgery, Breast/General Surgery, Cardiovascular Surgery, and Respiratory Surgery
- 4/17 Medical Safety Section, Clinical Resident Training Center, and Community Medical Collaboration Section established
- 2003** ■4/1 Rehabilitation Section and Section of Diagnostic Pathology established
- 2004** ■4/1 Central Clinical Facilities and Special Clinical Facilities reorganized into Central Clinical Sections (15), Medical Safety Section, Community Medical Collaboration Section, Medical Training Division, Clinical Resident Training Center, and Clinical Trials Management Office
Section of Emergency and ICU established
- 8/1 Section of Clinical Engineering established
- 2005** ■4/1 Section of Medical Oncology established
■8/1 Section of Clinical Nutrition established

- 2007** ■4/1 Cancer Center established
■8/31 Ward "D" completed
- 2008** ■6/1 Division of Infection Control and Prevention established
■7/1 Patient Support Center established
- 2009** ■4/1 Clinical Education Center for Physicians established
■10/20 Medical Oncology Department established
■12/1 Clinical Education Center for Nurses established
- 2010** ■3/1 Midwifery Clinic established
■7/1 Six beds added, for a total of 614 beds
- 2011** ■3/12 Disaster Medical Assistance Team (DMAT) dispatched for the Great East Japan Earthquake disaster assistance
■10/1 Center for Clinical Research and Advanced Medicine established
- 2013** ■3/25 Surgical Robot "da Vinci Si" introduced
- 2014** ■3/31 Heliport completed
■4/1 Hospital classroom (belongs to Seta Junior High School) established
- 2016** ■2/1 Advanced Nurse Training Promotion Office established
■4/1 Perinatal Center established
■10/1 Plastic and Reconstructive Surgery Department established
- 2017** ■4/1 Advanced Nurse Training Center established
- 2021** ■9/1 Stroke Care Unit (SCU) established
■10/29 Triage Center established

SUMS's Value Creation Process

supported by the local community, contributing to the community and playing an active part in the world



Sources
 •University Fact Book 2022 (Japan Business Federation)
 •Financial statements for FY2021
 •Environmental Report 2022 (Natural Capital)
 •2022 Profile: Shiga University of Medical Science



Value Creation

Creation

Create new values for medicine, nursing, and healthcare through excellent medical professional education

- Cultivating Diverse Medical Professionals With a Firm Ethical Standard
- STEAM Education
- Nurturing Nurses who Lead the Medical Care Field
- Fostering Forensic Generalists and Specialists Who Serve the Community

Challenge

Confront challenges of modern human society through world-leading research activity

- Establishment of the Advanced Medical Research Organization
- Core Research Projects
- Joint Research Projects and Industry-University Collaboration
- Expansion of Partner Universities

Contribution

Contribute to the community through the practice of medicine, nursing, and healthcare

- Struggles during the COVID-19 Pandemic
- Concept of the Functional Reinforcement Building
- Advanced Nurse Training
- Stroke Care Unit (SCU)
- SDGs × SUMS



Human Resources

Sustainability in
Human Resources
Development

Progress of the Third Medium-Term Goals and Plans

Six-Year Progress of the Third Medium-Term Goals and Plans

SUMS's 3 missions "3C"



1
Creation

Create new values for medicine, nursing and healthcare through excellent medical professional education.

2

Challenge

Confront challenges of modern human society through world-leading research activity.

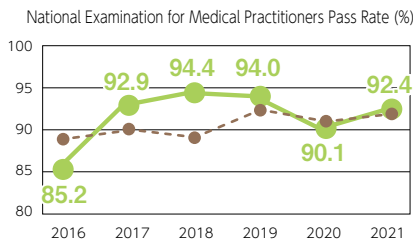
3

Contribution

Contribute to the community through the practice of medicine, nursing, and healthcare.

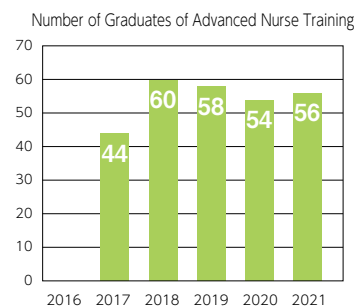
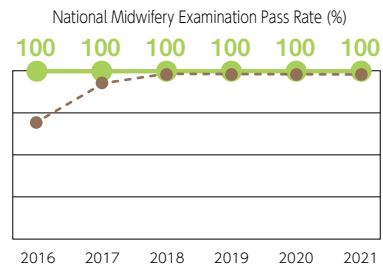
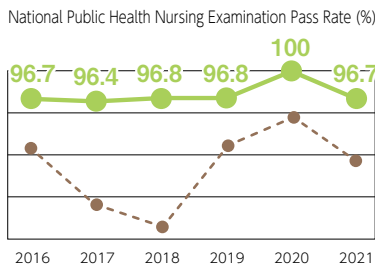
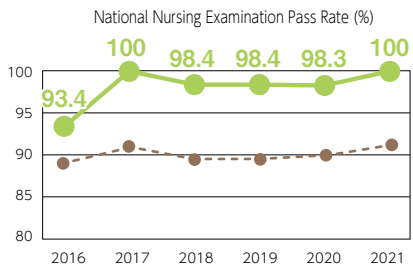
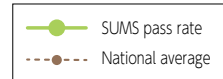
Fostering Medical Professionals

Creation



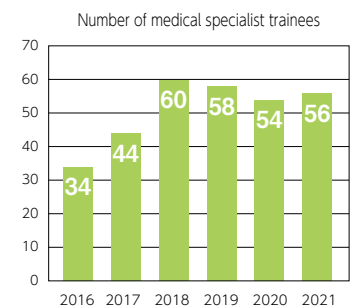
Efforts to improve the pass rate for the National Examination for Medical Practitioners

- The faculty members in charge interview all the students to check their progress toward taking the national exam for medical practitioners by reviewing the results of mock exams, and conduct additional interviews if necessary. Guidance and support are provided to each student according to their needs.
- An e-learning system for the national exam for medical practitioners was developed so that students can search for past questions by keywords such as subjects or diseases.



In FY2016, SUMS became the first national university to provide Advanced Nurse Training for specified medical acts, and many have completed the training over the past six years.

Since FY2021, the courses have been expanded to offer a total of 21 categories and 38 acts.



What are specified medical acts for nurses?

Each specific act refers to medical assistance performed by nurses with a high level of expertise and skills as well as practical comprehension and judgment. Nurses who have completed advanced training can assess patients' conditions so that they can receive care in a timely manner. These skilled nurses also help reduce the workload of medical doctors.

What is a medical specialist trainee?

In the New Training and Certifying System of Medical Specialists that began in FY2018, the term refers to residents who have completed two years of initial training and are in hospital's specialty training program to acquire a board-certification as a specialist.



2016 ▶ 2021

Promoting of Core Research Areas -From the 3rd Medium Term Goals and Plans-

Challenge

Medical research using cynomolgus monkeys

Goal
Create 5 types of genetically modified model cynomolgus monkeys.

Achieved
Created **9** types

Research on neurological intractable diseases

Goal
File 12 patent applications for neurological research focusing on dementia

Achieved
Filed **14** patent applications

Cancer research

Goal
Conduct at least 3 joint researches/projects that contribute to the development of cancer treatment.

Achieved
Conducted **13** researches/projects

Noncommunicable Diseases Research

Goal
Conduct 10 joint researches on noncommunicable diseases centering on epidemiology.

Achieved
Conducted **60** researches

Succeeded in generating a COVID-19 model monkey

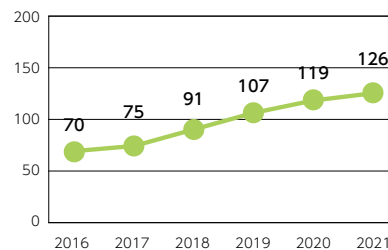


In FY2020, we received a donation of coronaviruses from the National Institute of Infectious Diseases (NIID) for the development of vaccines and therapeutics, conducted research on the development of a COVID-19 model monkey that exhibits pathology similar to that of human disease, and succeeded in

producing a model.

In addition, we have conducted research on the development of a therapeutic agent for COVID-19 and produced an antibody with a high neutralizing capacity that can be applied.

Number of patents held (cumulative value)



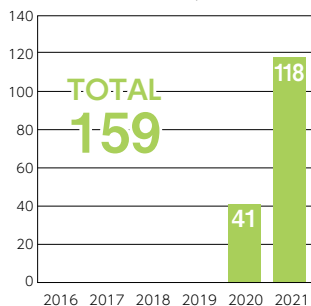
The ratio of the number of patents under license to the total number of patents held was **the highest (44.2%) among all universities in Japan***.

*From the University Fact Book 2021 (Japan Business Federation)

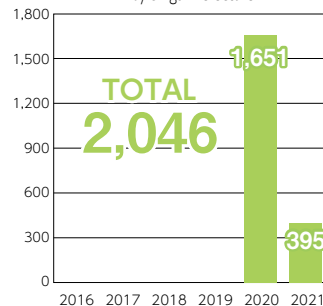
Contributing to Society through Medical Care

Contribution

Number of COVID-19 patients treated



Number of COVID-19 PCR tests requested by Shiga Prefecture



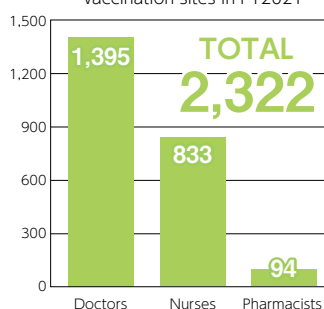
As the last resort of community medical care

In close collaboration with the COVID-19 Disaster Control Center of Shiga Prefecture, we responded to transfer requests from other facilities to treat patients, mainly those with severe symptoms, which accounted for more than 90% of the total number of treated patients at our hospital.

To accommodate these severely ill patients, a ward (with 25 beds) dedicated to COVID-19 infections was established.

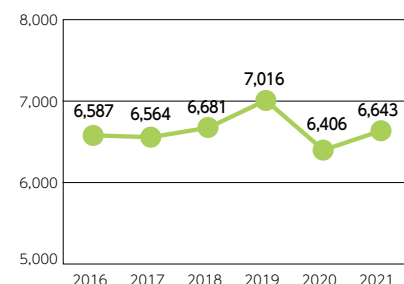
We accepted one critically ill patient from Osaka Prefecture, where the medical care shortage had become serious.

Number of staff dispatched to vaccination sites in FY2021



Number of surgeries (performed in operating rooms)

Although the number of surgeries decreased in FY2020 due to the COVID-19 pandemic, we did our best to maintain our practice to provide appropriate surgical treatment to patients who needed surgery under such circumstance.



The Fourth Term Has Begun

The Fourth Medium-Term Goals and Plans -with Key Performance Indicators (KPI)-

To Be a Sustainable and Attractive University

With the start of the Fourth Medium-Term Goals and Plans, it has become mandatory to set performance indicators to show the level of achievement for each medium-term plan. SUMS has set 57 performance indicators for outputs and outcomes.

Sustainability in Community Healthcare

- Fostering outstanding physicians who will settle in Shiga Prefecture
- Training nurses who will become future leaders
(Visiting nurses, Graduates of Advanced Nurse Training, Nurses specializing in infectious diseases, etc.)

KPI



Percentage of medical school graduates enrolled in the quota for regional service employed in Shiga immediately after graduation

At least **90%** on average over 6 years

KPI



Number of medical school graduates employed in Shiga immediately after graduation

Increase by at least **5%** over 6 years

Sustainability in Education

- Cultivating human resources capable of AI development and ICT utilization
- Establishing an education system for the future (STEAM education, online education, simulation education, etc.)

KPI



Number of lectures on themes involving integration of medicine and other fields including AI

Increase by at least **25%** over 6 years

KPI



Pass rate of the National Exam for Medical Practitioners for new graduates

At least **95%** on average over 6 years

Sustainability in Research

- Deepening distinctive research
- Developing young human resources who will become future leaders
- Increasing external funds through promotion of industry-academia collaborative research

KPI



Number of products and services to which SUMS contributes in development

More than **double** in 6 years

KPI



Number of papers published in English per young researcher

Increase by at least **10%** over 6 years

Sustainability in Running the Operation

- Improving work efficiency, including the use of digital technologies
- Expanding Gender Equality Promotion Plan to the local community
- Building a functionally enhanced ward of the University Hospital

KPI



Reduced work hours through the introduction of digital technologies such as AI and RPA

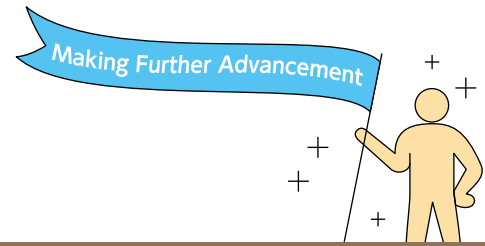
At least **1,000** cumulative hours over 6 years

KPI



Number of participants in Skills Refresher Course (Career continuity support for female physicians)


At least **6** participants over 6 years



2022 ▶ 2027


Sustainable & Attractive

KPI

 Number of medical specialist trainees at the University Hospital (SUMS alumni)


At least **35** trainees on average over 6 years

KPI

 Number of visiting nurses in Shiga

At least **2.8** nurses on average over 6 years

KPI

 Number of nurses with advanced training assigned to the University Hospital

At least **50** nurses by FY2027

KPI

 Pass rate of the National Nursing Exam for new graduates

At least **98%** on average over 6 years

KPI

 Pass rate of the National Public Health Nursing Exam for new graduates

At least **98%** on average over 6 years

KPI

 Pass rate of the National Midwifery Exam for new graduates

At least **98%** on average over 6 years

*We have a plan to establish a double-degree or joint-degree program for doctoral course to nurture young researchers who will actively work worldwide.

KPI

 Intellectual property-related income

More than **double** in 6 years

KPI

 Income from external funds through collaborative research and open laboratories


Increase by at least **5%** over 6 years

KPI

 Number of double-degree program or equivalent programs


At least **1** in 6 years

KPI

 Number of patients transported by ambulance and helicopter

Increase by at least **25%** by FY2027

KPI

 Number of gastrointestinal endoscopic examinations and treatments

Increase by at least **25%** by FY2027

The functionally enhanced ward of the University Hospital will be completed around January 2026.



Image for the new building

Quick Facts of SUMS



Founded in 1974

The 50th anniversary will be celebrated in 2024

From the Lake Country to the World

Half a century of services to health care and beyond

50th Anniversary Website



滋賀医科大学

Faculty and Staff

(May 2022)

1,417

Percentage of females

- All Faculty and Staff members: 62.0%
- Faculty members: 26.8%

The Japan Association of National Universities developed the "Action Plan for the Promotion of Gender Equality at National Universities" and a follow-up survey has been conducted annually. The target for the female faculty ratio by 2025 is set at 31%. However, the survey shows the average ratio at universities were 24.4% in 2020 and 25.0% in 2021. Although SUMS is above the average, we must continue to create an environment where both men and women can work equally.

Number of Students

(May 2022)

Male Female

Undergraduate 922

School of Medicine: 682 (60.6% Male, 39.4% Female) → 413 Male, 269 Female

School of Nursing: 240 (95.8% Male, 4.2% Female) → 230 Male, 10 Female

Graduate 214

Doctoral Program: 170 (65.3% Male, 34.7% Female) → 111 Male, 59 Female

Master's Program: 44 (79.5% Male, 20.5% Female) → 35 Male, 9 Female

International Students: 15.0%

Adult Graduate Students: 72.4%

Total 1,136

Male-to-Female Ratio: 543 Male (47.8%) : 593 Female (52.2%)

approx. 11 : 12

Student-to-Faculty Ratio

(May 2022)

Faculty : Undergraduate students = 1 : 2.4

National University Average ST Ratio = 1 : 9.4

(researched by IR office)

SUMS has more faculty than the national average for the number of students, which allows us to provide generous support in teaching and research. We also endeavor to give better guidance to each student.

Career Paths of Alumni in Shiga

(FY2021)

Considering the percentage of students from Shiga at the time of admission (18.8% for the School of Medicine and 39.7% for the School of Nursing), it is clear that even those not from Shiga remain in the prefecture after graduating. We believe this is connected to our university's goal of "contributing to the community."

40.0% School of Medicine

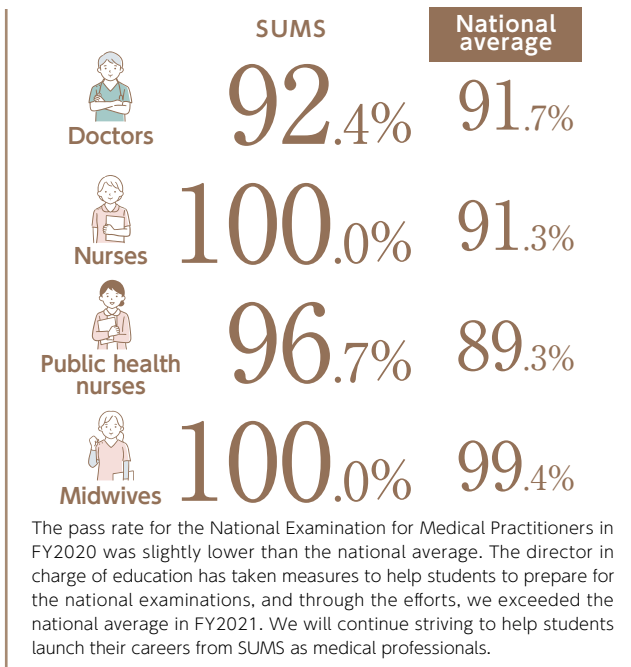
56.5% School of Nursing

Percentage of enrollment of students from Shiga

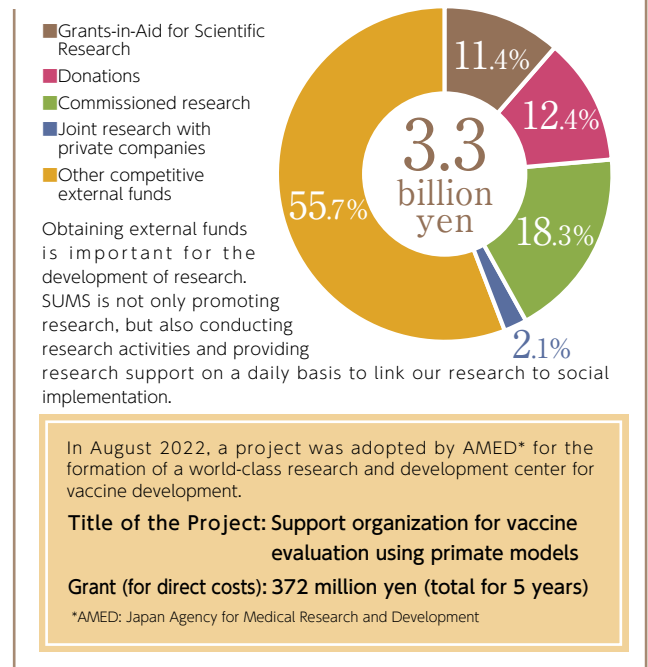
Year of admission	School of Medicine (%)	School of Nursing (%)
2014	18.8	39.7
2015	18.8	39.7
2016	18.8	39.7
2017	18.8	39.7
2018	18.8	39.7
2019	18.8	39.7
2020	18.8	39.7
2021	18.8	39.7
2022	18.8	39.7

Legend: ■ From Shiga Prefecture ■ From other prefectures

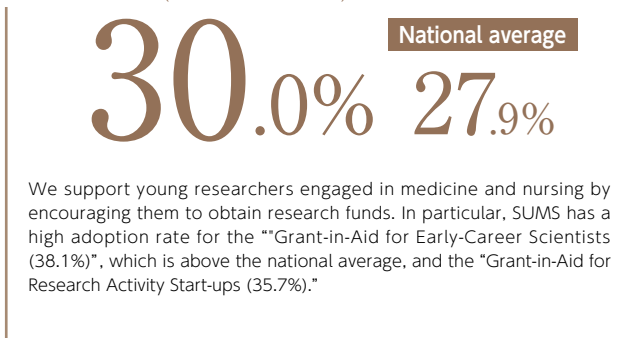
National Examination Pass Rate (FY2021)



External Funds Received (FY2021)



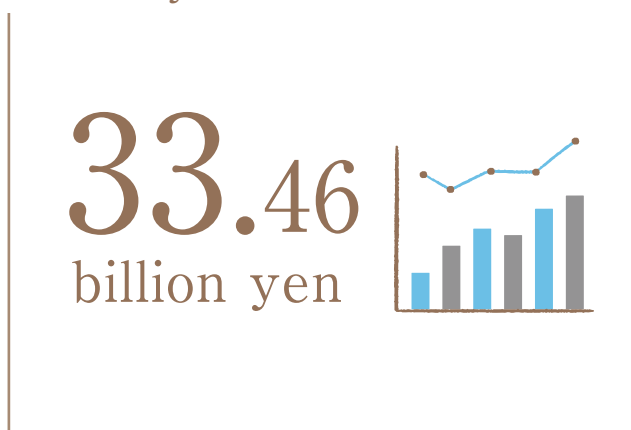
Adoption Rate of Grants-in-Aid for Scientific Research (KAKENHI) (FY2021)



Patent Licensing Rate University Fact Book 2022 (Japan Business Federation)

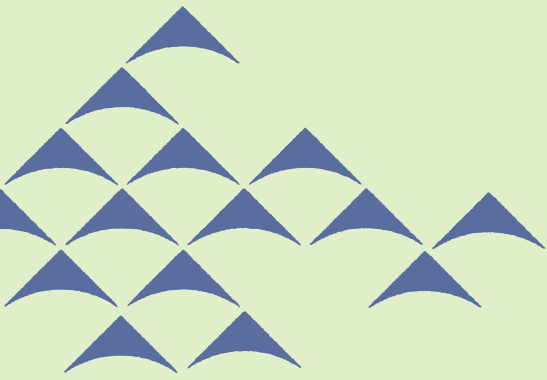


Ordinary Revenues (FY2021)



Times Higher Education THE World University Rankings: Japan 2022





Missions: International Exchanges

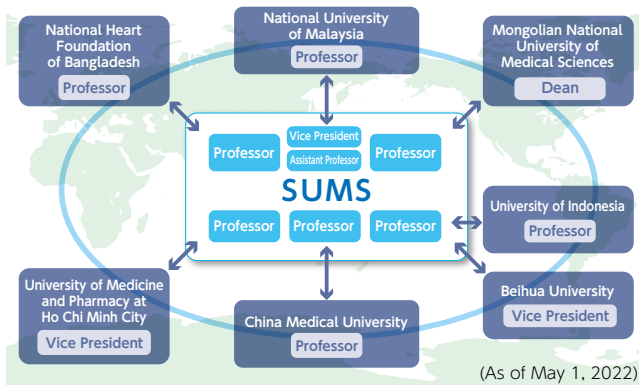
To Contribute to the International Society from Shiga



International Exchanges between Shiga and Overseas



Partner Institutions and Supporting Faculty



In order to facilitate international cooperation, we have supporting faculty members at some of the partner institutions to assist in the selection of exchange students, to follow up with alumni, to promote joint research, and to provide other support as a point of contact.

Number of Partner Institutions
(from 13 countries)



25

International Exchange of Students and Faculty

Number of Students studied abroad



46

(Average of 2016-2019)

26%
of students
study abroad
before
graduation

Number of International Students accepted
(from 9 countries)



32

(As of May 1, 2022)

Number of Faculty sent overseas



250

(Average of 2016-2019)

18.5%
of faculty

Capacity of International Students Housing
(International House)



45

residents
(As of May 1, 2022)

In order to cultivate internationally competent medical professionals, we promote international exchange programs for both students and faculty, while actively accepting excellent students from overseas, mainly from Asian countries. We have also established the International Joint Research Division at the Medical Innovation Research Center (MIRC) to strengthen international cooperation.

Serving the International Community from MIRC

To Contribute to the Future 未来への貢献

The Medical Innovation Research Centre (MIRC) established in 2022 aims to contribute to medical innovation through research results, nurture future research leaders and enhance SUMS presence in the international arena through research collaboration and joint degree programmes. For example, SUMS' s collaboration with Universiti Kebangsaan Malaysia (UKM) from 2011 will be strengthened with the proposed SUMS-UKM double degree or joint PhD degree program in Ageing Science. The collaboration will advance the field of neurodegeneration and age-related diseases; a growing problem worldwide, helping to delay the onset of age-related non-communicable diseases and expand the 'Healthy Life Expectancy' (HALE) of individuals which is a priority of the World Health Organization.

MIRC is poised to spearhead the international relationships of SUMS further to a different level and welcomes researchers both locally and internationally to move forward together to improve the quality of life during ageing through state of the art, pushing the boundaries research.

- 研究成果の実装化
- 将来の研究リーダーの育成
- 認知症や生活習慣病に関する国際共同研究の推進
- 健康寿命の拡大に貢献
- 海外協定校とダブルディグリー
またはジョイントディグリープログラムの構築



Wan Zurinah Wan Ngah (ワンズリナワンナグ)
Special Contract Professor

International Center

Support system and current initiatives



SUMS-TAS: SUMS Total Advanced Support for Foreign Students

The International Center works together with the Student Division and the IR Office to provide consistent support for international students from pre-admission to post-graduation, tailored to each student's individual circumstances.

International Center Website



SUMS Grant (Scholarship for International Students)

In collaboration with our partner institutions, we recruit outstanding students from overseas and provide them with the opportunity to pursue advanced education and research in our doctoral program.

Japanese Government (MEXT) Scholarship (Preferred Allocation)

For the MEXT Scholarship with University Recommendation, SUMS has a quota of 4 students and we have been accepting 4 international students annually since 2021.

Japanese Language Class

Five standard courses and two special courses (pre-starter and Japanese Language Proficiency Test (JLPT) preparation) are available for all international students to choose from, depending on their language level and goals. We also assist students seeking employment in Japan by helping them study for the JLPT.



Aslina Pahrudin Arrozi
(アスリナ・パルディン・アロズィー)

Medical Innovation Research Center 創発的研究センター
Completed Ph.D. in Sept. 2022 and appointed as Special Contract Assistant Professor in Oct. 2022
2022年9月 修了 / 2022年10月より特任助教

Learning Japanese Brings Positive Results 日本語の学びをきっかけに

Learning Japanese is important because there are situations where English doesn't work. The Japanese language classes enables you to learn not only the language but also the culture, and to interact with other international students. As your Japanese improves, you will be more positive about your academic work as well, and it may even lead you to find a job in Japan. Enjoy learning Japanese!

日本語を学ぶことは大切だと思います。日本では、英語が通じず、コミュニケーションがうまく行かないことがあるからです。昨年、国際交流センターに日本語クラスができて、私の状況は変わりました。先生は英語と日本語の両方で教えてくれるのでわかりやすく、日本文化も学べ、他の留学生とも交流できるので、私はクラスを楽しんでいます。

日本語が上達すると、日本と私の国で仕事を見つけるのに有利だと思います。他の言語と文化を学ぶことは、より良い学業成績と前向きな姿勢を得ることができます。

みなさん、日本語を楽しく学びましょう!



From Shiga to the World: International alumni working abroad

Aiming for Sustainable Social Change

サステナブルな社会変革をめざして

I lead a program of research which addresses health disparities faced by socially vulnerable population groups, including ethnic-minority/immigrant communities in Canada, with a focus on equity, diversity, and inclusion. Striving for social innovation for sustainable change to address these health inequalities requires meaningful engagement with all levels of stakeholders. Thus, I have embraced Community Based Participatory Research, Human Centered Design, and Integrated Knowledge Translation approaches into my program of research. Knowledge mobilization and meaningful community engagement is at the cores. I have been a highly published researcher and contribute to community capacity building through equitable and empowered involvement of community members in the research process.

私は現在、カナダにおける少数民族や移民といった社会的弱者の集団が直面する健康格差の問題に取り組んでいます。この課題を解決するためには、研究の成果を一般に普及させ、コミュニティへ効果的に参画することが必要です。私の研究では、住民たちが分け隔てなく自ら課題解決に関与し、そのことを通じてコミュニティの力が強まるよう促しています。



Turin Chowdhury (チュウリン・チョウドリ)

Associate Professor, University of Calgary
カルガリー大学准教授

Completed Ph.D. in Mar. 2008, Department
of Social Medicine
社会医学講座2008年3月修了



劉磊 (リュウライ) Liu Lei

Assistant Professor, Harvard Medical School
ハーバード・メディカルスクール助教

分子神経科学研究センター (現・神経難病研究センター)

Completed Ph.D. in Sep. 2014, Molecular
Neuroscience Research Center

2014年9月修了

Thanks to the Research Environment of SUMS

今の私を創ってくれた滋賀医大の研究環境に感謝

I currently work as an Assistant Professor of Neurology and principal investigator at Harvard Medical School. My lab is a biological question-oriented lab focused on translational research of Alzheimer's disease and related dementias (ADRD), including cerebral amyloid angiopathy and down syndrome dementia. We applied multidisciplinary approaches including, genetic analysis, brain imaging (MRI and PET scan), CSF/plasma biomarkers, transcriptome/proteome of patient-derived iPSC-neurons, and brain in situ neuropathological methods, to deep phenotype large cohorts of patients. We aim to understand the pathogenesis of ADRD at a whole new different level. Meanwhile, we also conduct technical innovations to precisely measure neurodegeneration-related protein biomarkers in as little as 10 ul of human plasma. Through close collaborations with many academic and industrial partners, we believe that we will develop an accurate diagnosis and disease-modifying therapies for ADRD in near future.

As an alumnus of SUMS, I benefited from the research-friendly environment of SUMS and similarly developed my research program. I believe that SUMS has a lot of potential and capability to educate next-generation leaders of medical care and science.

私のラボは、アルツハイマー型認知症に関する生物学的な橋渡し研究を行っています。産学にわたる緊密な協力者を得て、認知症に関する正確な診断や病態修飾療法を、近い将来に開発できるものと確信しています。滋賀医科大学在学中は素晴らしい研究環境のもとで研究プログラムを進展させることができ、現在の研究に繋がられたことに感謝しています。



Integrated Report Website



Please give us your feedback



国立大学法人

滋賀医科大学

SHIGA UNIVERSITY OF MEDICAL SCIENCE

